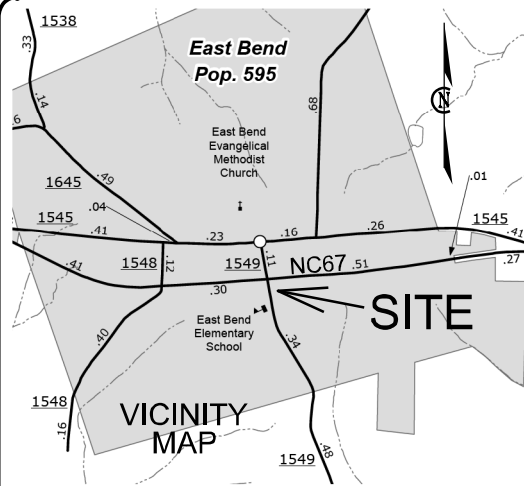


YADKIN COUNTY, SR 1549, P#11.209911



# STATE OF NORTH CAROLINA

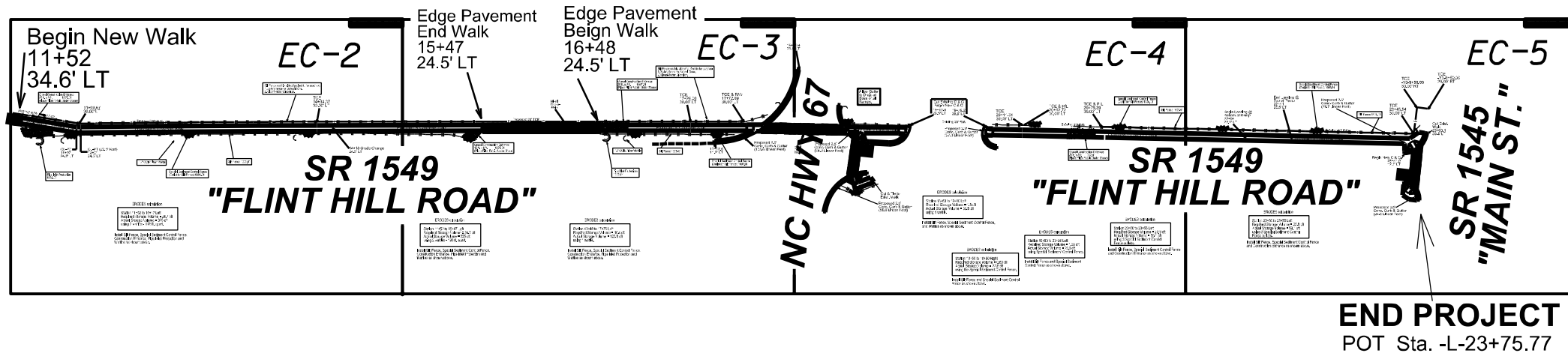
## DIVISION OF HIGHWAYS

### PLAN FOR PROPOSED HIGHWAY EROSION CONTROL

STATE	STATE PROJECT REFERENCE NO.	SHEET NO.	TOTAL SHEETS
N.C.	11.209911	EC-1	5
STATE PROJ. NO.	F.A. PROJ. NO.	DESCRIPTION	

#### EROSION AND SEDIMENT CONTROL MEASURES

Std. #	Description	Symbol
1630.03	Temporary Silt Ditch	
1630.05	Temporary Diversion	
1605.01	Temporary Silt Fence	
1606.01	Special Sediment Control Fence	
1622.01	Temporary Berms and Slope Drains	
1630.02	Silt Basin Type B	
1633.01	Temporary Rock Silt Check Type-A	
1633.02	Temporary Rock Silt Check Type-A with Matting and Polyacrylamide (PAM)	
1633.02	Temporary Rock Silt Check Type-B	
1633.02	Wattle / Coir Fiber Wattle	
1633.02	Wattle / Coir Fiber Wattle with Polyacrylamide (PAM)	
1634.01	Temporary Rock Sediment Dam Type-A	
1634.02	Temporary Rock Sediment Dam Type-B	
1635.01	Rock Pipe Inlet Sediment Trap Type-A	
1635.02	Rock Pipe Inlet Sediment Trap Type-B	
1630.04	Stilling Basin	
1630.06	Special Stilling Basin	
1632.01	Rock Inlet Sediment Trap Type A	
1632.02	Rock Inlet Sediment Trap Type B	
1632.03	Rock Inlet Sediment Trap Type C	
1630.06	Skimmer Basin	
1630.06	Tiered Skimmer Basin	
1630.06	Infiltration Basin	



### SOIL STABILIZATION TIMEFRAMES

SITE DESCRIPTION	STABILIZATION TIME	TIMEFRAME EXCEPTIONS
PERIMETER DIKES, SWALES, DITCHES AND SLOPES	7 DAYS	NONE
HIGH QUALITY WATER (HQW) ZONES	7 DAYS	NONE
SLOPES STEEPER THAN 3:1	7 DAYS	IF SLOPES ARE 10' OR LESS IN LENGTH AND ARE NOT STEEPER THAN 2:1, 14 DAYS ARE ALLOWED.
SLOPES 3:1 OR FLATTER	14 DAYS	7 DAYS FOR SLOPES GREATER THAN 50' IN LENGTH.
ALL OTHER AREAS WITH SLOPES FLATTER THAN 4:1	14 DAYS	NONE, EXCEPT FOR PERIMETERS AND HQW ZONES.

THIS PROJECT IS AT THE WESTERN LIMITS OF, BUT NOT WITHIN, THE WS-IV "YADKIN RIVER (WINSTON-SALEM) UPPER PROTECTED AREA, PUBLIC WATERSUPPLY WATERSHED AREA.

THE RUN-OFF FROM THIS SITE FLOWS APPROXIMATELY 2.9 MILES SOUTHWESTERLY, OVER LAND, TO "LOGAN CREEK"; INDEX # 12-83-2-(0.3) CLASS: C (7/31/1998) RIVER BASIN: YADKIN PEE-DEE

ROADSIDE ENVIRONMENTAL UNIT  
DIVISION OF HIGHWAYS  
STATE OF NORTH CAROLINA

THESE EROSION AND SEDIMENT CONTROL PLANS COMPLY WITH THE REGULATIONS SET FORTH BY THE NCG-010000 GENERAL CONSTRUCTION PERMIT EFFECTIVE APRIL 01, 2019 ISSUED BY THE NORTH CAROLINA DEPARTMENT OF ENVIRONMENT AND NATURAL RESOURCES DIVISION OF WATER QUALITY.

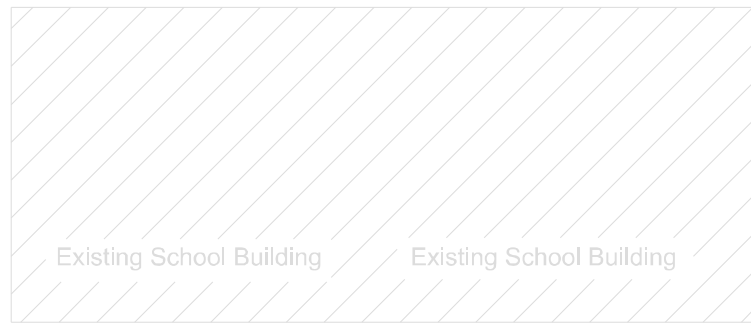
Prepared in the Office of:  
**DIVISION II, ELKIN CONSTRUCTION**  
419 OAKLAND DRIVE  
ELKIN, NC 28621  
  
**2018 STANDARD SPECIFICATIONS**

Designed by:  
**STAN DARNELL** 3478  
NAME LEVEL III CERTIFICATION NO.

Roadway Standard Drawings

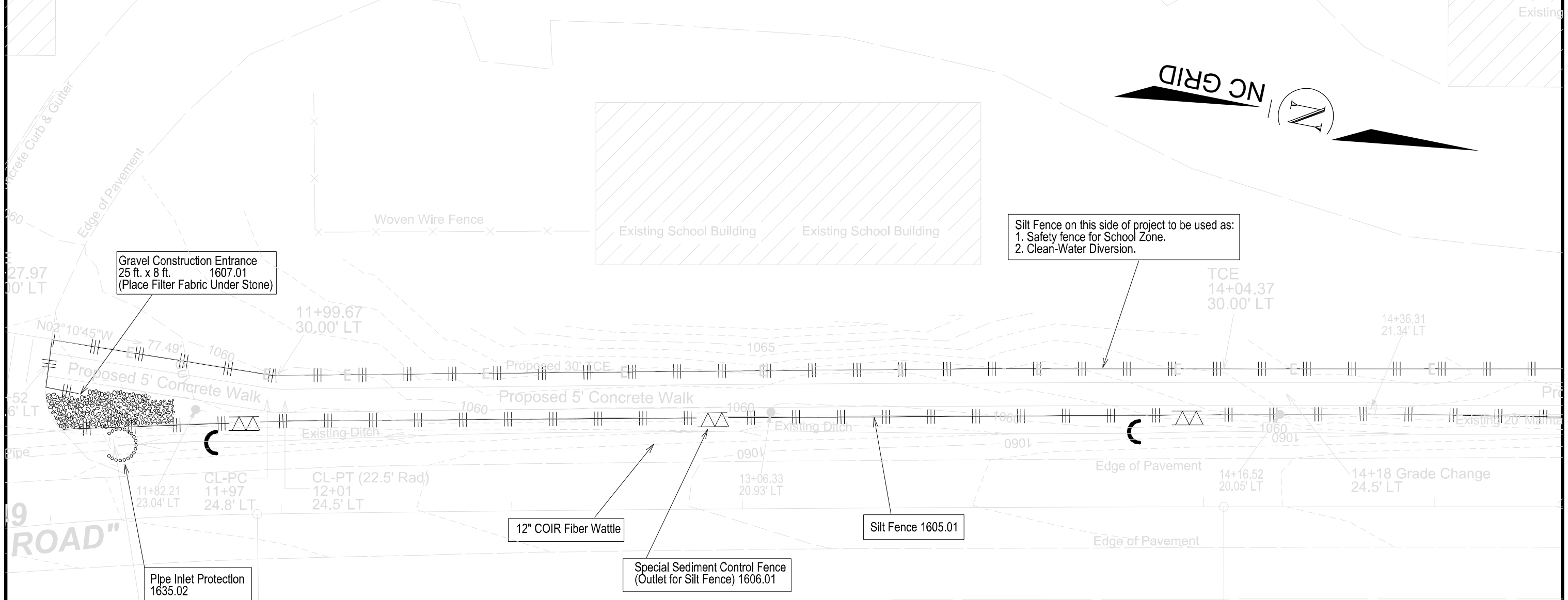
The following roadway english standards as appear in "Roadway Standard Drawings"- Roadway Design Unit - N. C. Department of Transportation - Raleigh, N. C., dated January 2018 and the latest revision thereto are applicable to this project and by reference hereby are considered a part of these plans.

1604.01 Railroad Erosion Control Detail	1632.01 Rock Inlet Sediment Trap Type A
1605.01 Temporary Silt Fence	1632.02 Rock Inlet Sediment Trap Type B
1606.01 Special Sediment Control Fence	1632.03 Rock Inlet Sediment Trap Type C
1607.01 Gravel Construction Entrance	1633.01 Temporary Rock Silt Check Type A
1622.01 Temporary Berms and Slope Drains	1633.02 Temporary Rock Silt Check Type B
1630.01 Riser Basin	1634.01 Temporary Rock Sediment Dam Type A
1630.02 Silt Basin Type B	1634.02 Temporary Rock Sediment Dam Type B
1630.03 Temporary Silt Ditch	1635.01 Rock Pipe Inlet Sediment Trap Type A
1630.04 Stilling Basin	1635.02 Rock Pipe Inlet Sediment Trap Type B
1630.05 Temporary Diversion	1640.01 Coir Fiber Jaffle
1630.06 Special Stilling Basin	1645.01 Temporary Stream Crossing
1631.01 Matting Installation	



Silt Fence on this side of project to be used as:  
 1. Safety fence for School Zone.  
 2. Clean-Water Diversion.

Gravel Construction Entrance  
 25 ft. x 8 ft. 1607.01  
 (Place Filter Fabric Under Stone)



9 ROAD"

Pipe Inlet Protection  
 1635.02

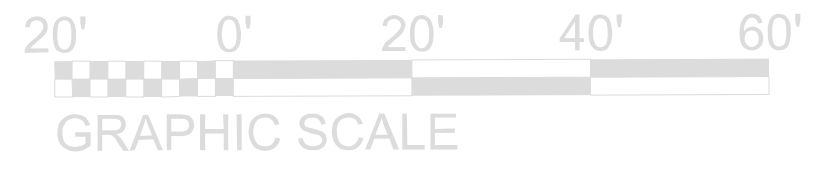
Inlet 24" CMP  
 11+64.86  
 16.13' LT  
 Inv. El.=1055.7'

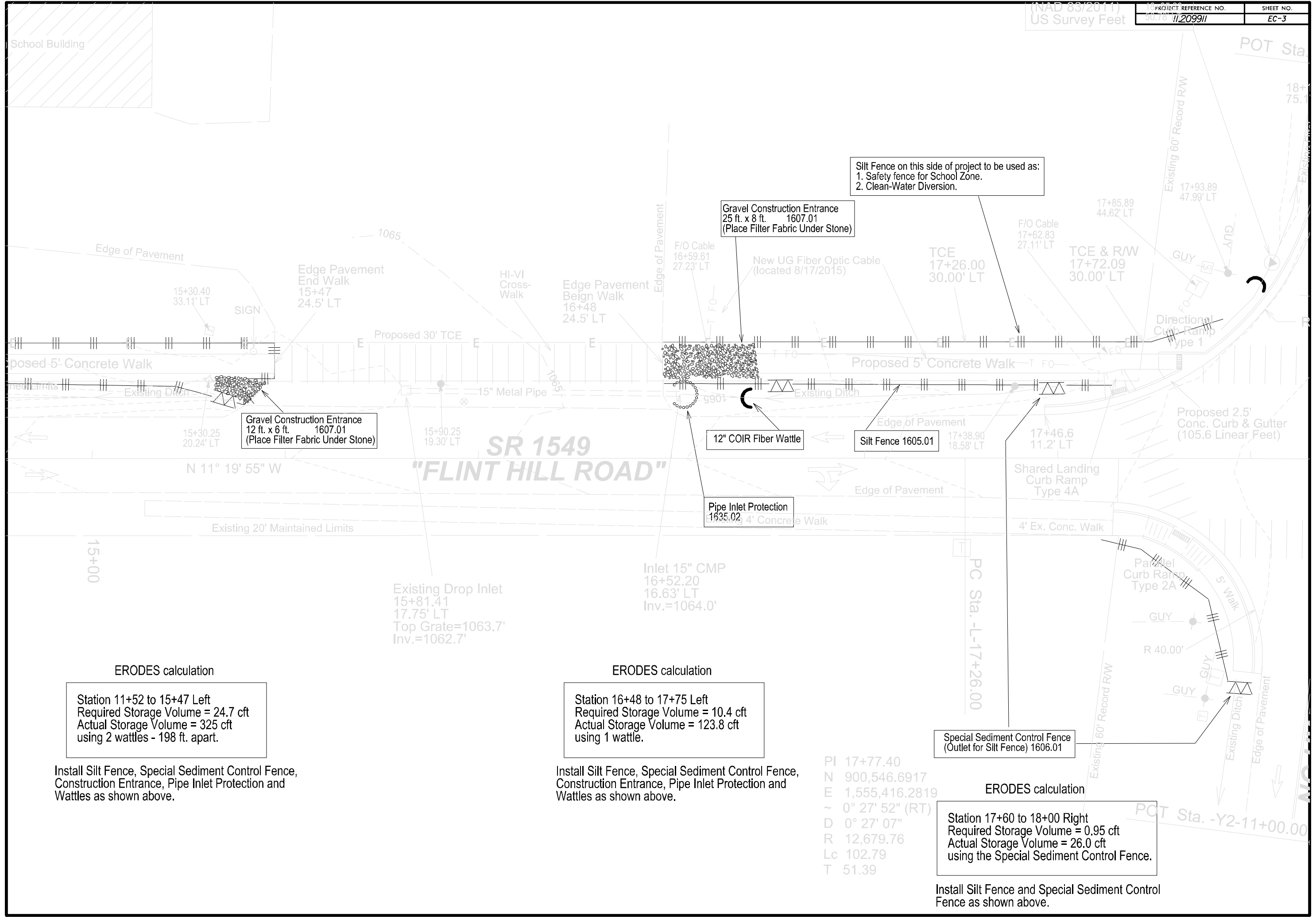
PCC Sta. -L-11+94.80

ERODES calculation  
 Station 11+52 to 15+47 Left  
 Required Storage Volume = 24.7 cft  
 Actual Storage Volume = 325 cft  
 using 2 wattles - 198 ft. apart.

Install Silt Fence, Special Sediment Control Fence,  
 Construction Entrance, Pipe Inlet Protection and  
 Wattles as shown above.

PI 12+99.59  
 N 900,078.1953  
 E 1,555,510.1683  
 ~ 0° 47' 37" (RT)  
 D 0° 22' 43"  
 R 15,131.92  
 Lc 209.57  
 T 104.79





Silt Fence on this side of project to be used as:  
 1. Safety fence for School Zone.  
 2. Clean-Water Diversion.

Gravel Construction Entrance  
 25 ft. x 8 ft. 1607.01  
 (Place Filter Fabric Under Stone)

Gravel Construction Entrance  
 12 ft. x 6 ft. 1607.01  
 (Place Filter Fabric Under Stone)

12" COIR Fiber Wattle

Silt Fence 1605.01

Pipe Inlet Protection  
 1635.02

Special Sediment Control Fence  
 (Outlet for Silt Fence) 1606.01

**ERODES calculation**  
 Station 11+52 to 15+47 Left  
 Required Storage Volume = 24.7 cft  
 Actual Storage Volume = 325 cft  
 using 2 wattles - 198 ft. apart.

Install Silt Fence, Special Sediment Control Fence,  
 Construction Entrance, Pipe Inlet Protection and  
 Wattles as shown above.

**ERODES calculation**  
 Station 16+48 to 17+75 Left  
 Required Storage Volume = 10.4 cft  
 Actual Storage Volume = 123.8 cft  
 using 1 wattle.

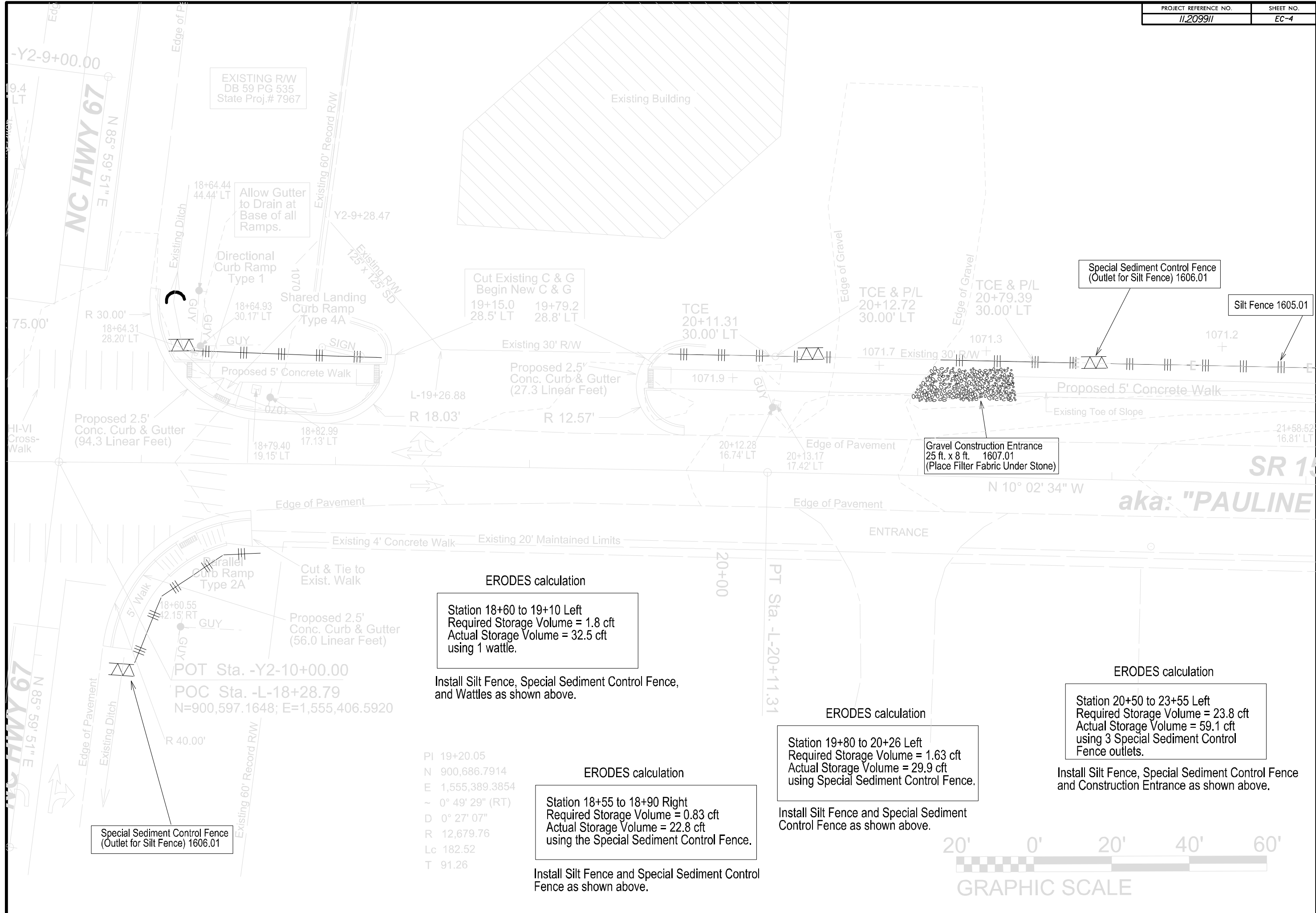
Install Silt Fence, Special Sediment Control Fence,  
 Construction Entrance, Pipe Inlet Protection and  
 Wattles as shown above.

**ERODES calculation**  
 Station 17+60 to 18+00 Right  
 Required Storage Volume = 0.95 cft  
 Actual Storage Volume = 26.0 cft  
 using the Special Sediment Control Fence.

Install Silt Fence and Special Sediment Control  
 Fence as shown above.

PI 17+77.40  
 N 900,546.6917  
 E 1,555,416.2819  
 ~ 0° 27' 52" (RT)  
 D 0° 27' 07"  
 R 12,679.76  
 Lc 102.79  
 T 51.39

POT Sta. -Y2-11+00.00



EXISTING R/W  
DB 59 PG 535  
State Proj.# 7967

Allow Gutter  
to Drain at  
Base of all  
Ramps.

Cut Existing C & G  
Begin New C & G  
19+15.0 19+79.2  
28.5' LT 28.8' LT

Special Sediment Control Fence  
(Outlet for Silt Fence) 1606.01

Silt Fence 1605.01

Gravel Construction Entrance  
25 ft. x 8 ft. 1607.01  
(Place Filter Fabric Under Stone)

**ERODES calculation**  
Station 18+60 to 19+10 Left  
Required Storage Volume = 1.8 cft  
Actual Storage Volume = 32.5 cft  
using 1 wattle.

Install Silt Fence, Special Sediment Control Fence,  
and Wattles as shown above.

**ERODES calculation**  
Station 19+80 to 20+26 Left  
Required Storage Volume = 1.63 cft  
Actual Storage Volume = 29.9 cft  
using Special Sediment Control Fence.

Install Silt Fence and Special Sediment  
Control Fence as shown above.

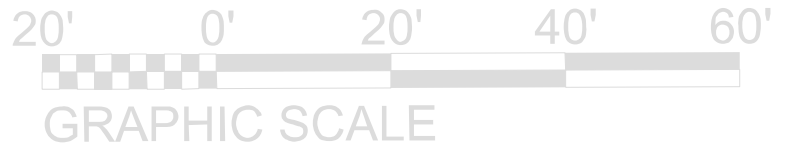
**ERODES calculation**  
Station 20+50 to 23+55 Left  
Required Storage Volume = 23.8 cft  
Actual Storage Volume = 59.1 cft  
using 3 Special Sediment Control  
Fence outlets.

Install Silt Fence, Special Sediment Control Fence  
and Construction Entrance as shown above.

**ERODES calculation**  
Station 18+55 to 18+90 Right  
Required Storage Volume = 0.83 cft  
Actual Storage Volume = 22.8 cft  
using the Special Sediment Control Fence.

Install Silt Fence and Special Sediment Control  
Fence as shown above.

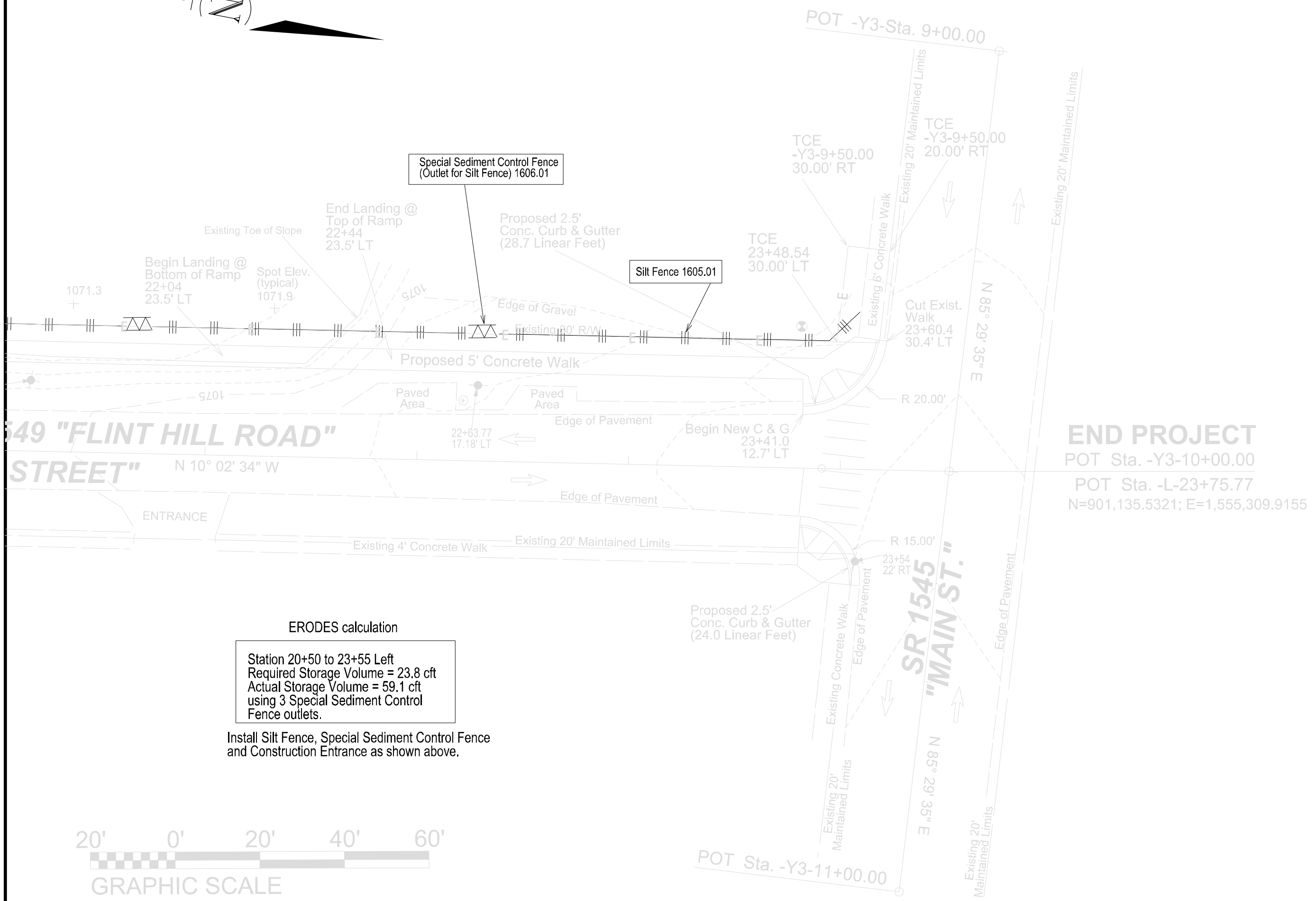
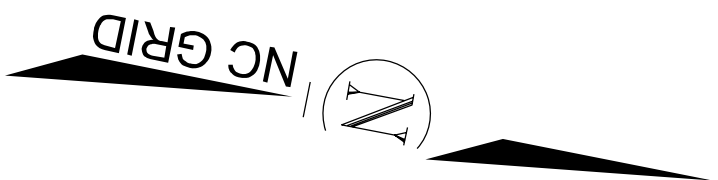
PI 19+20.05  
N 900,686.7914  
E 1,555,389.3854  
~ 0° 49' 29" (RT)  
D 0° 27' 07"  
R 12,679.76  
Lc 182.52  
T 91.26



Special Sediment Control Fence  
(Outlet for Silt Fence) 1606.01

POT Sta. -Y2-10+00.00  
POC Sta. -L-18+28.79  
N=900,597.1648; E=1,555,406.5920

SR 15  
aka: "PAULINE"

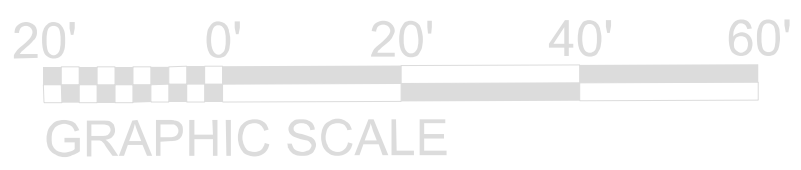


Special Sediment Control Fence  
(Outlet for Silt Fence) 1606.01

Silt Fence 1605.01

ERODES calculation  
 Station 20+50 to 23+55 Left  
 Required Storage Volume = 23.8 cft  
 Actual Storage Volume = 59.1 cft  
 using 3 Special Sediment Control  
 Fence outlets.

Install Silt Fence, Special Sediment Control Fence  
 and Construction Entrance as shown above.



**END PROJECT**  
 POT Sta. -Y3-10+00.00  
 POT Sta. -L-23+75.77  
 N=901,135.5321; E=1,555,309.9155